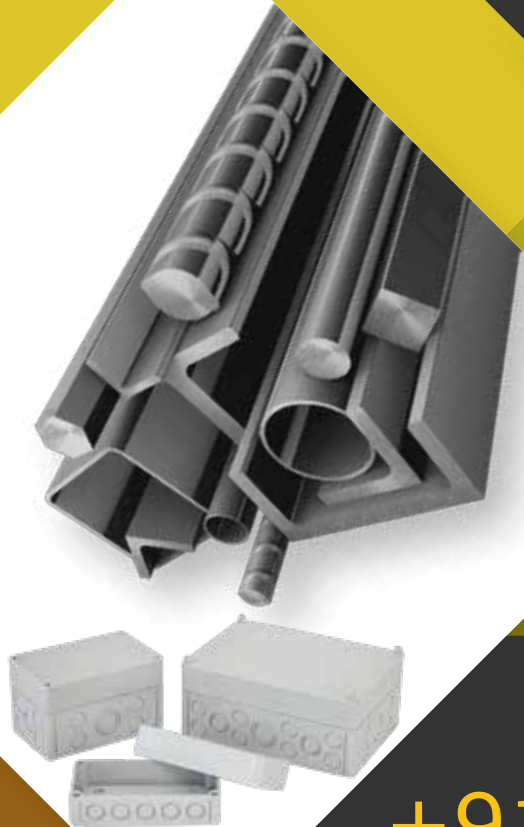




Electricals

Quality Service is Our Moto
IP Group Of Industries



For More Detail's
+91 74053 10151



info@ipelectricals.com
www.ipelectricals.com



About IP Electricals

IPElectricals is a Growing Organization, An Electrical Engineering Company located at Vadodara City, the Engineering Hub of Gujarat State (India), engaged in Manufacturing, supplying & Trading of various types of Electrical Goods & Project Engineering Materials.

The company provides its products nationwide catering OEM, Project Contractors, Corporate Sectors, Public Sectors n Dealers - Retailers as well.

The Company has a wide experience of more than 10 years; in the area of Production Process, Production Techniques, Designing a Specific Product, Developments of the Product n its Betterment from user side, Sales to after Sales-Servicing etc. :

The founder, A techno-crate graduate engineer of the Company has opened up the scenario of highly potential business for branded junction boxes, enclosures.

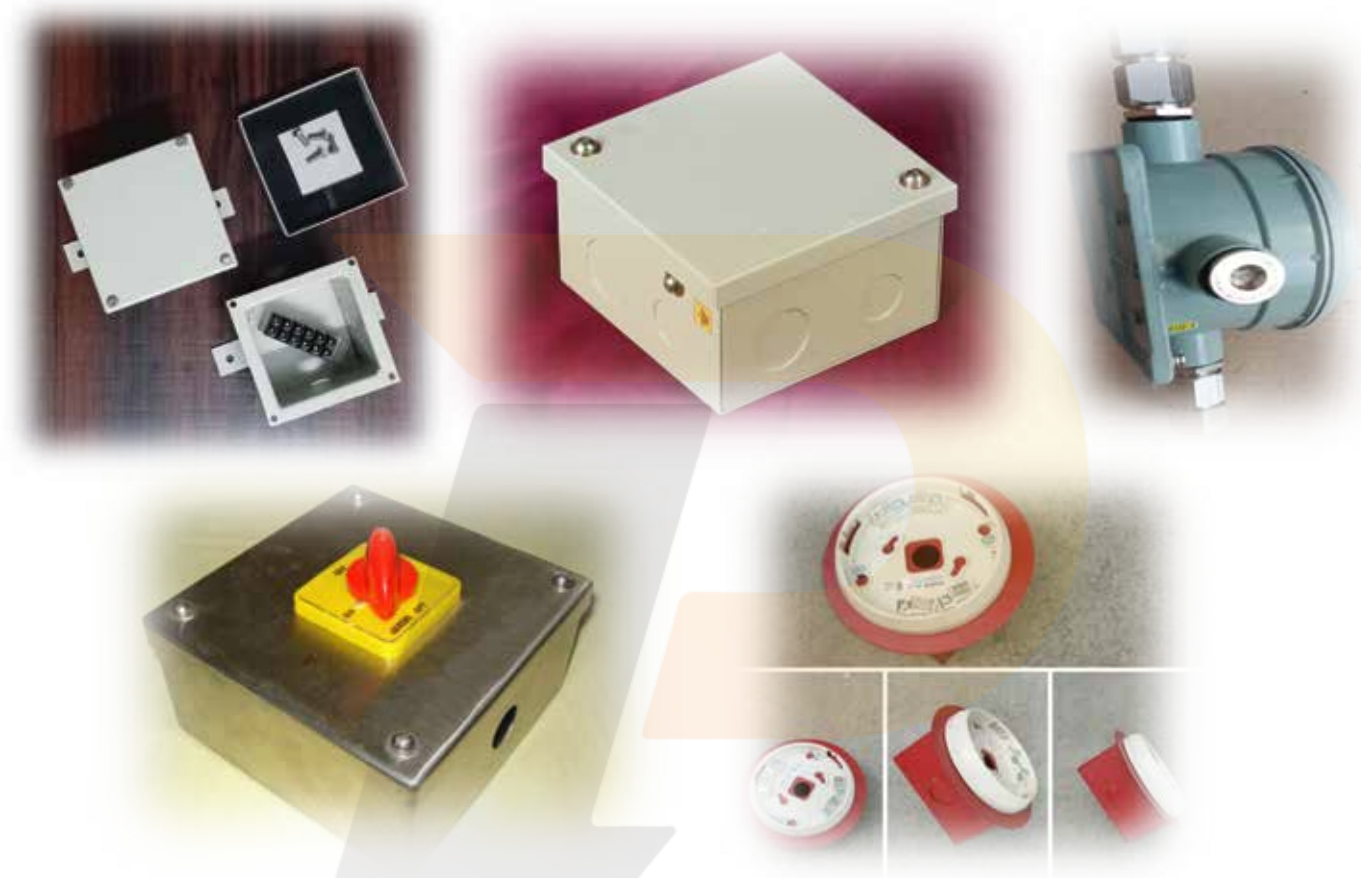
The Core business initiated with, is a MS Powder Coated Junction Boxes & Enclosures.

Now, IPElectricals added Many more products in its basket. The company is now in to ...

- => Mild Steel & Stainless Steel Junction Boxes
- => Plastic Molded Junction Boxes
- => Perforated & Ladder Type Cable Trays,
- => Panel Enclosures duly wired,
- => Press Parts Components,
- => Material Handeling Equipment,
- => Customized Fabrication Work & Project Contracting.



About Enclosures



The Core business initiated with, is a Junction Boxes. IPElectricals offers a wide range of sheet metal Junction Boxes, Enclosures & Distribution Boards for providing versatile solutions for a modern day wide industrial and domestic applications. The Strength is Wide Range. The availability of variety of Enclosures & JBs at one stop, with a will to deliver standard & customized Boxes for a specific application; reflects our strength.

Enclosures we deals in are of

- > **Sheet Metal Coated Boxes (MS Sheet)**
- > **Stainless Steel Enclosures (SS Sheet)**
- > **Plastic Moulded Enclosures (PP/ABS/PC)**
- > **Glass Fiber Enclosures (SMC/GRP/FRP)**
- > **Casted Enclosures (Alu & CI)**

The Robust, Compact & Flexible Design ensures complete safety in use. The Junction Boxes, Enclosures & Distribution Boards are made with State of Art Manufacturing Practices provide uniformity & durability, resulting in High consistency & aesthetically superior finish versatile.



About Powder Coated Box



Powder Coated Boxes :

- > Plain Junction Boxes (Indoor Type)
- > Concealed Boxes (Normal & Modular Type)
- > Socket JBs (Various Combinations)
- > MCB DBs (Single & Double Door)
- > Telephone Tag Box (10 Pair to 2000 Pair)
- > Push Button Stations
- > Fire & LV System Boxes
- > Pole Boxes (Elect & CCTV Applications)
- > Customized Boxes



About **Panel Enclosures Duly Wired with Switchgear Components :**

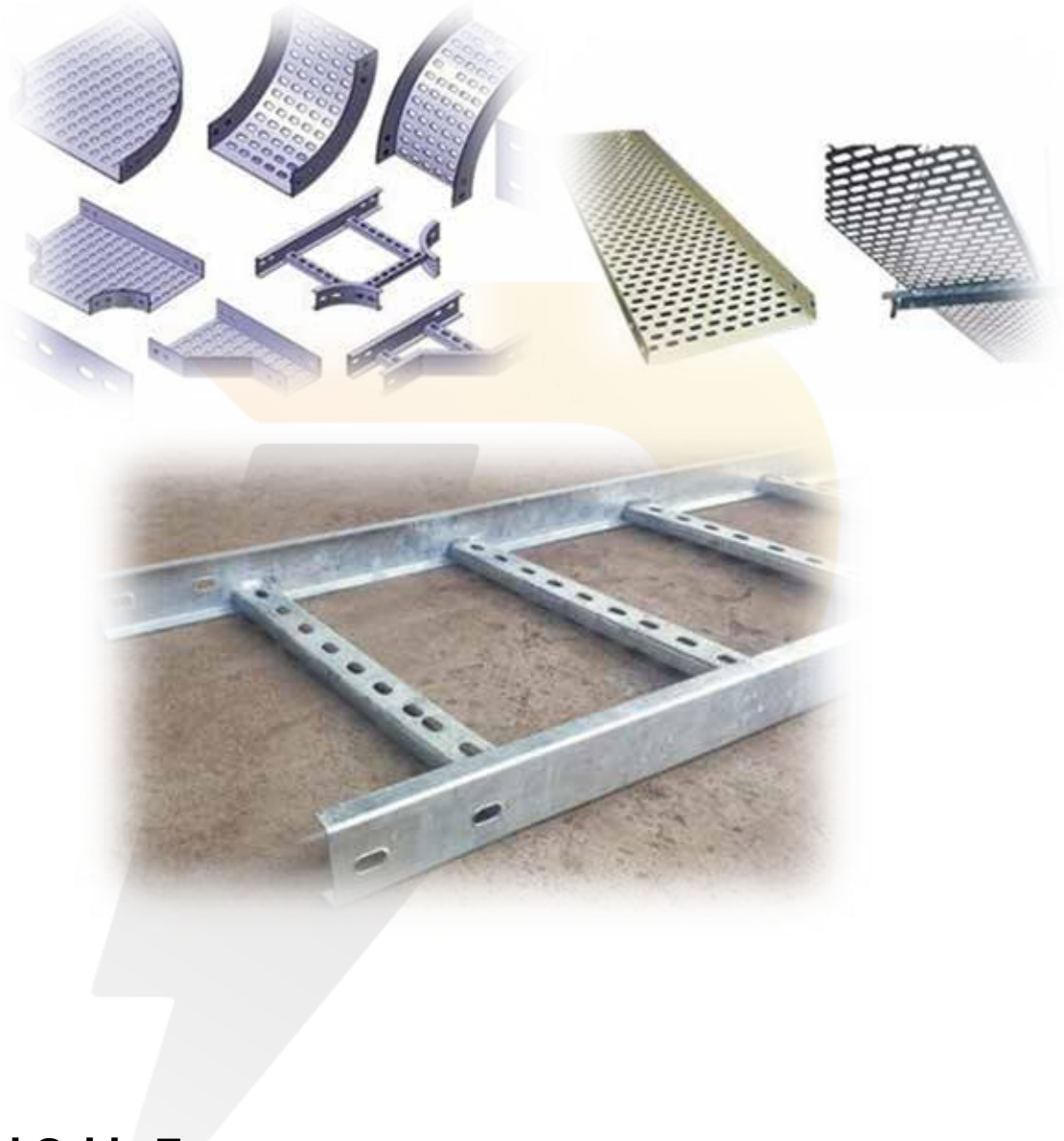


Panel Enclosures Duly Wired with Switchgear Components :

- > Control Panels
- > Power Panels
- > VFD Control & Automation Panels
- > Lighting Distribution Boards
- > Metering Panels
- > Specialized & Customized Panels
- > Panel Installation & Commissioning
- > Refurbishment Jobs etc.



About Electrical Cable Trays



Electrical Cable Trays :

- > Perforated Cable Trays (With & Without Covers)
- > Ladder Type Cable Trays
- > Race Ways for Specific Applications.

IPElectricals supply varieties of Cable Trays with MOC : SS Sheets, GP Sheet or even Powder Coated Trays n Hot Dipped also. Company Supply FRP/GRP Cable Trays on as and when required basis.



About Plastic Moulded JB's



Plastic Moulded Junction Box / Enclosures & other articles :

JBs for Electrical, Electronic, Instrumentation, Communication & networking, CCTV & many other industrial Application. JBs for Indoor & outdoor requirements are available.

IPElectricals do offers Product Designing, Die Developments & later producing and manufacturing for any kind of plastic articles n products. The MOC can be Polypropylene, ABS, HIPS, HDPE/LDPE or Polycarbonate. We do undertake all kinds of Domestic & Industrial product development challenge.

+91 74053 10151



About Plastic Moulded JB's



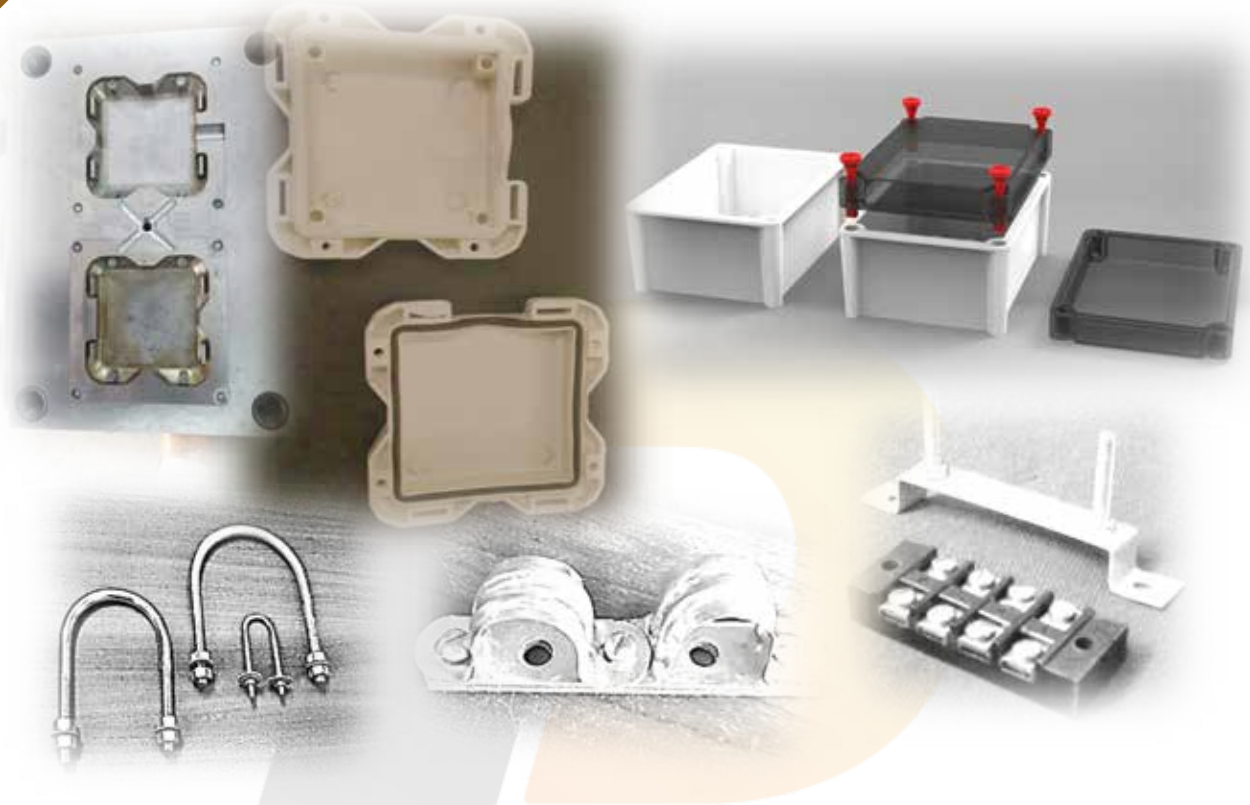
Glass Fiber Reinforced Polyester (GRP/FRP/SMC) Jn Box :

JBs for Electrical Lighting & Metering & many other industrial Application. JB's for Indoor & outdoor requirements are available.

We have Meter Boards also for Government Projects for Main Line d Domestic connection. Energy meter Enclosures are also in our basket.



About Plastic Moulded JB's



Press Parts Components / Die Development :

IPElectricals do offers Services like, Product Designing, Die Developments, Production Set up, later manufacturing n supply against specific requirements; for any kind of Articles/products.

The MOC can be Mild Steel, Stainless Steel, Plastic, Aluminium or SMC-FRP. We do undertake all kinds of Domestic & Industrial product development challenge.

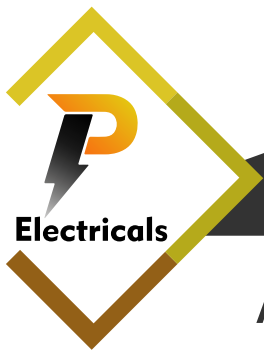
Some of Major Components we deals in; like –

U – Bolts

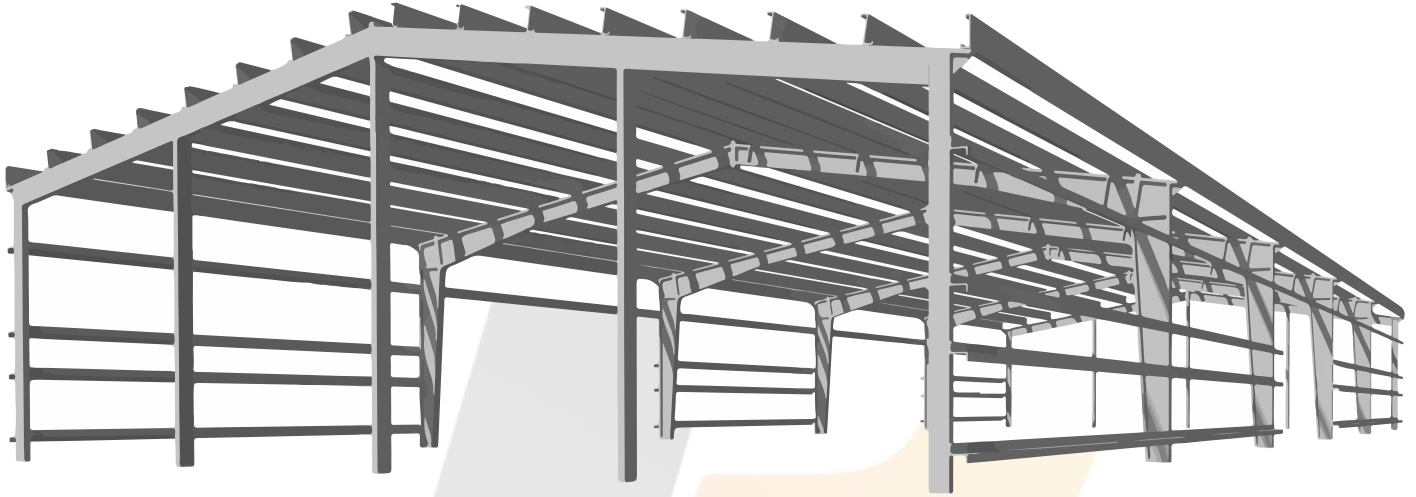
C – Clamps

DIN Channels

Cable & Conduit Clamps



About Pre Engineering Structure



Pre Engineering Structure :

Pre Engineered building is a concept of steel structure having high structural strength, economical designs while it supersedes the conventional fabrication, it lowers down the conventional fabrication, It lowers down the stress of foundation, hence there is less cost on civil construction as well.

Tailor made building based on client's requirement and actual design calculation using tapered sections. An efficiently designed Pre-Engineered Building can be lighter than the conventional steel building by upto 30%.

IPElectricals is well equipped to produce PreEngineered buildings as per client's requirements. The company has all the latest machineries to support this segment. The entire design of column, rafters and other accessories is based on international structural standards and involve high technical welding and quality production.

These are the structures basically produced at the factory with the high tensile steel material by collecting complete information of shed/buildings.



Material Handling Equipment

Drum Trolley



Specification

- > 3 Wheel Trolley
- > 2 PU Wheel 10" x 2"
- > 1 Nylon Wheel 6" x 2"
- > Capacity : 350 kgs
- > With Locking System

Two Side Support Trolley

Specification

- > Platform size : 3'x2', 3'x4', 2'x2'
- > 4 wheel p.p / nylon
- > Wheel size : 4" x 2"
- > Capacity : 500 kgs





Material Handling Equipment

Single Wheel Barrow



Specification

- > Size :- 2.5' X 1.5' X 1'
- > With One Scooter Wheel
- > Thickness :- 1.6 mm
- > Capacity : 100 kgs
- > Material :- MS

Side Support Trolley

Specification

- > Platform size : 3' x 2', 3' x 4', 2' x 2'
- > 4 wheel p.p / nylon



+91 74053 10151



Material Handling Equipment

HYDROLIC SEASOR LIFT TABLE



Specification

Load Capacity (kg)	350	500	1000
Max Lifting Height (mm)	1300	900	1000
Lowest Height (mm)	350	300	400
The Dimension Of Table	900 x 500 x 50	810 x 500 x 50	1000 x 510 x 50
Overall Dimension (mm)	1250 x 510 x 960	1130 x 500 x 970	1300 x 510 x 1000
Packing Size (mm)	1015 x 515 x 370	925 x 515 x 320	1120 x 520 x 360
Self Weight (kg)	110	85	110

Double Wheel Barrow

Specification

- > Size : 3' x 2' x 1'
- > 2 Pneumatic Type (High Quality)

- > Size : 2.5' x 1.5' x 1'
- > 2 Pneumatic Type (High Quality)



+91 74053 10151



Material Handling Equipment

SINGLE CYLINDER TROLLEY



Specification

- > Size : 48" (L) X 12" (W) 12" (D)
- > Three wheel P.P / NYLON
- > Capacity : 200 Kgs with chain locking system

DOUBLE CYLINDER TROLLEY

Specification

- > Size : 48" (L) X 24" (W) 12" (D)
- > Three wheel P.P / NYLON 2 fix size : 10" x 2"
- > One movable size : 6" x 2"
- > Capacity : 300 Kgs with chain locking system



+91 74053 10151



Material Handling Equipment

PLATFORM TRUCK TROLLEY



Specification

- > Capacity :500 kgs , 1 ton , 1.5 ton
- > Size : 3' x 2', 3' x 4', 4' x 2', 5' x 3'
- > Wheel Size :- 6"x 2", 8"x2", 12"x2"
- > 4 wheel scooter/ rubber

PLATFORM TROLLEY

Specification

- > Capacity :500 kgs
- > Size : 3' x 2', 3' x 4', 2' x 2'
- > 4"x 2" WHEEL
- > 4 wheel p.p / nylon

